



Salish Sea Regatta
Royal Vancouver Yacht Club
September 6 - 8, 2024
Vancouver Canada



Sailing Instructions

[NP] denotes a rule for which competitors may not protest. This changes RRS 60.1(a).

1 RULES

- 1.1 The event is governed by the rules as defined in *The Racing Rules of Sailing (RRS)*.
- 1.2 [DP] [NP] The use of a satellite-based YB Tracker is provided to all competitors and required to be utilized as described in Notice of Race 10.
- 1.3 In accordance with World Sailing Test Rule DR21-01, the definition of *Start* is changed to:
A boat starts when her hull having been entirely on the pre-start side of the starting line, and having complied with rule 30.1 if it applies, any part of her hull crosses the starting line from the pre-start side to the course side either
 - (a) at or after her starting signal, or
 - (b) during the last 4 minutes before her starting signal.
- 1.4 RRS 42 is amended to permit use of boat engines to back down to clear weeds or debris.
- 1.5 RRS 51 Movable Ballast and RRS 52 Manual Power are modified to permit the positioning of hull appendages, specifically adjustable keels and water ballast, and other control devices powered by hydraulic or electric power on boats so designed and so rated by the handicap authority. All such movable ballast systems shall be capable of manual operation if powered systems are inoperable.
- 1.6 RRS 51 is further modified for all boats to permit the movement of sails not in use while racing; however all sails not being flown must remain within a boat's lifelines.
- 1.7 Boats may declare that they are sailing double-handed, in which case the appropriate ORC rating will be used. In addition, they may use their Autohelm or equivalent.

2 CHANGES TO SAILING INSTRUCTIONS

- 2.1 Any change to the sailing instructions will be posted before 0800 on the day it will take effect, except that any change to the schedule of races will be posted by 2000 on the day before it will take effect.

- 2.2 Changes to a sailing instruction may be made on the water by displaying flag L with one sound signal.

3 COMMUNICATIONS WITH COMPETITORS

- 3.1 Notices to competitors will be posted on the official notice board located at www.royalvan.com/SalishSea.
- 3.2 On the water, the race committee intends to monitor and communicate with competitors on VHF channel 67.

4 CODE OF CONDUCT

- 4.1 [DP] Competitors and support persons shall comply with reasonable requests from race officials.
- 4.2 [DP] Competitors and support persons shall handle equipment provided by the organizing authority with care, seamanship, in accordance with any instructions for its use and without interfering with its functionality.

5 DIVISIONS & CLASS FLAGS

Division	Flag	Rating Breaks
ORC 1	Numeral pennant 1	ORC APH less than 510
ORC 2	Numeral pennant 1	ORC APH 510 or greater
PHRF	Numeral pennant 3	

6 COURSES

The courses are described in the Notice of Race, except that the PHRF division will start near the Royal Vancouver YC Jericho breakwater, then leave the Point Grey Bell Buoy to port, then mark T10 to starboard, then finishing east of Silva Bay.

7 OBSTRUCTION

[DP] Area Whiskey Golf is an obstruction if closed. The race committee will attempt to advise boats by VHF radio at 0800 on Friday and Saturday morning on the status of the Area. If the announcement is not made, the Area is closed.

8 YB TRACKERS

- 8.1 There is no deposit associated with this requirement; however boats are responsible for returning the tracker in working order. Broken or lost transponders will be subject to replacement/damage charge of up to \$1,000.

- 8.2 YB Trackers shall be installed on or above deck, on or close to the stern of the boat. It shall be mounted to a stable and permanent fixture of the boat, with tracker antennae pointing skyward. It shall not be placed under any cover, or platform of any material type, and as far as possible from other instrument antenna. Trackers must remain on, as installed, and capable of full operation for the duration of the regatta.
- 8.3 The OA will use data provided by the trackers to determine the finish of ORC R1, the start of ORC R2 and at all interim finishing lines during the event.
- 8.4 In the event of a significant discrepancy between a boat's observed start or finish time compared with that reported by the YB Tracker, competitors may file a scoring inquiry on the event web site.
- 8.5 Any boat that wilfully reports a false position or impedes the transmission of the YB Tracker or its position reports will be considered in violation of RRS 2 – Fair Sailing.

9 THE START

- 9.1 Unless otherwise stated, the starting line is between staff displaying an orange flag on the race committee vessel and the course side of a nearby orange inflatable.
- 9.2 For the start of ORC race 2, the starting line is virtual, between the points shown in SI 9.3 below. No visual or audio signals will be made. RRS 26 and RRS 29 will not apply. The time sequence is:

0900	Beginning of Warning period
0901	Beginning of Preparatory period. Boats are now <i>racing</i>
0905	Start at the virtual starting line

- 9.3 Starting details are shown below

Divisions 1 & 2	
ORC Race 1 - Friday	Starting line in vicinity of Point Grey Bell Buoy
ORC Race 2 - Saturday	Virtual starting line between Thormanby West at 49° 32.569' N, 124° 3.806' W and Thormanby East at 49° 32.767' W, 124° 3.331' W)
ORC Race 3 - Sunday	Starting line east of Tugboat Island

Divisions 3 & 3A	
PHRF Race 1 - Saturday	Starting line north of Royal Vancouver Yacht Club, Jericho
PHRF Race 2 - Sunday	Starting line east of Tugboat Island

9.4 The starting time and location for Race 1 for Divisions 3 and 3A is changed to

Location: North of the Royal Vancouver YC Jericho breakwater
Time: Warning signal at 1000

9.5 When a boat starts in accordance with item (b) of the definition *Start*, she may return to the pre-start side of the line; otherwise the starting penalty shall be 20 minutes added to her elapsed time.

9.6 A boat that does not start within 10 minutes after her starting signal will be scored Did Not Start without a hearing. This changes RRS A5.1 and A5.2.

10 INTERIM FINISHING LINES – SHORTENED COURSE WAYPOINTS

10.1 If three boats in a division fail to finish within the time limit, finishes will be recorded at the interim finish lines shown below.

For ORC fleets:

Race 1	Line between Selma Park Breakwater (49° 27.962' N, 123° 44.658' W) and near Blunden Point (49° 15.167' N, 124° 4.276' W).
Race 2	Line between Entrance Island Light (49° 12.551' N, 123° 48.490' W) and Cape Roger Curtis (49° 20.400' N, 123° 25.971' W).
Race 3	Line between Point Grey Bell Buoy (49° 17.340' N, 123° 15.980' W) and south Passage Island (49° 20.356' N, 123° 18.415' W).

For PHRF fleet:

Race 1	Crossing 123° 30' W.
Race 2	Line between Point Grey Bell Buoy (49° 17.340' N, 123° 15.980' W) and Passage Island (49° 20.356' N, 123° 18.415' W).

11 THE FINISH

11.1 For ORC divisions:

Race 1	The finishing line is between the beacon at Francis Point (49° 36.207' N, 124° 3.548' W) and a virtual mark located 0.2 nm at 270° true from the beacon at 49° 36.207' N, 124° 3.783' W.
Race 2	The finishing line is between the Tugboat Island beacon (49° 08.88' N 123° 41.115' W) and the north end of Saturnina Island (49° 8.782' N, 123° 40.737' W) .

Race 3	The finishing line is between the northwest corner of the RVanYC Jericho breakwater and a nearby orange inflatable.
--------	---

11.2 For the PHRF division

Race 1	The finishing line is between the Tugboat Island beacon (49° 08.88 N 123° 41.115W) and the north end of Saturnina Island (49° 8.782 123° 40.737).
Race 2	The finishing line is between the northwest corner of the RVanYC Jericho breakwater and a nearby orange inflatable.

11.3 Boats shall record their interim and full course finishing times and take screen shots from their onboard navigation systems for use in the event of a YB Tracker or system failure. This data must be retained until final results are posted on the event web site.

11.4 Boats shall return their YB Trackers to the front desk of the RVanYC Jericho clubhouse immediately after finishing on Sunday.

12 EQUIPMENT AND MEASUREMENT CHECKS

12.1 A boat or equipment may be inspected at any time for compliance with the notice of race and sailing instructions.

12.2 [NP] Boats must race with their normal complement of sails, running gear and personal equipment. Any such equipment used for any race of the series must be aboard at all times while racing.

13 HEARING REQUESTS

13.1 The protest time limit is 2200 for each race day.

13.2 Hearing requests shall be filed electronically on the regatta website.

13.3 Notices will be posted on the regatta website to inform competitors of date and time of hearings in which they are parties or named as witnesses. It is expected that hearings will be held on September 12 or 13 at Royal Vancouver YC Jericho clubhouse.

14 SCORING

14.1 One race is required to be completed to constitute a series.

14.2 A boat's series score is the total of her race scores.

15 SAFETY REGULATIONS

[DP] A boat that retires from a race shall notify the race committee at the first reasonable opportunity by VHF radio, by email to racecommittee@rvan.ca or by phone or text to 604 908-3119.

16 EQUIPMENT AND MEASUREMENT CHECKS

A boat or equipment may be inspected at any time for compliance with the notice of race and sailing instructions.

17 HAUL-OUT RESTRICTIONS

[DP] Boats shall not be hauled out during the event except with and according to the terms of prior written permission of the race committee.

18 DIVING EQUIPMENT AND PLASTIC POOLS

18.1 Underwater breathing apparatus and plastic pools or their equivalent shall not be used around boats between the preparatory signal of the first race and the end of the last race of the event.

18.2 Boats shall not be cleaned below the waterline by any means during the event.

19 RISK STATEMENT

RRS 3 states: 'The responsibility for a boat's decision to participate in a race or to continue to race is hers alone.' By participating in this event each competitor agrees and acknowledges that sailing is a potentially dangerous activity with inherent risks. These risks include strong winds and rough seas, sudden changes in weather, failure of equipment, boat handling errors, poor seamanship by other boats, loss of balance on an unstable platform and fatigue resulting in increased risk of injury. **Inherent in the sport of sailing is the risk of permanent, catastrophic injury or death by drowning, trauma, hypothermia or other causes.**

Addendum A

ORC Race 1 Virtual Finishing Line - Friday



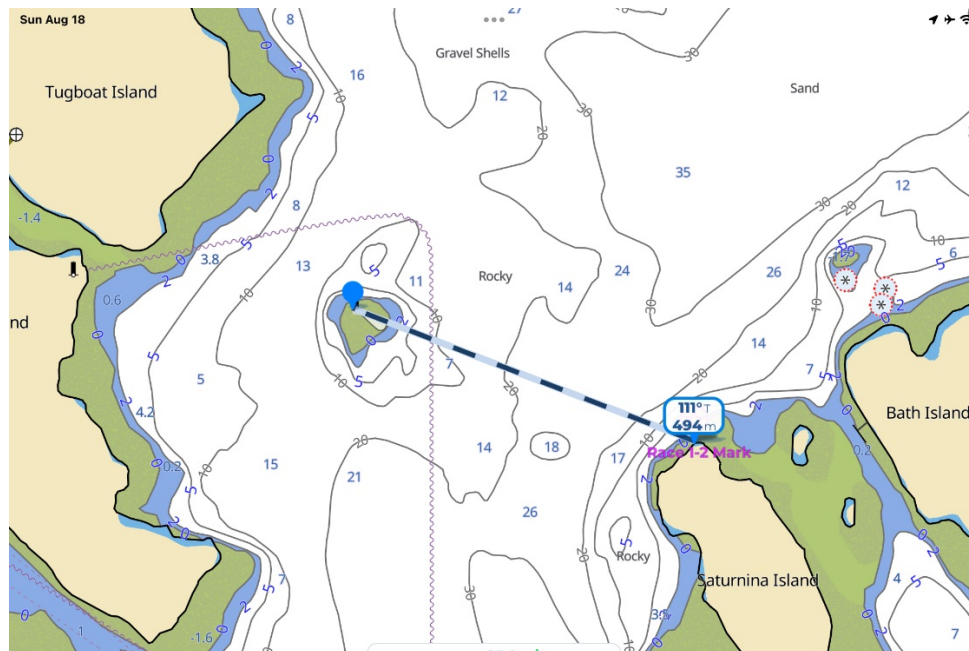
ORC Race 1 Interim Finishing Line - Friday



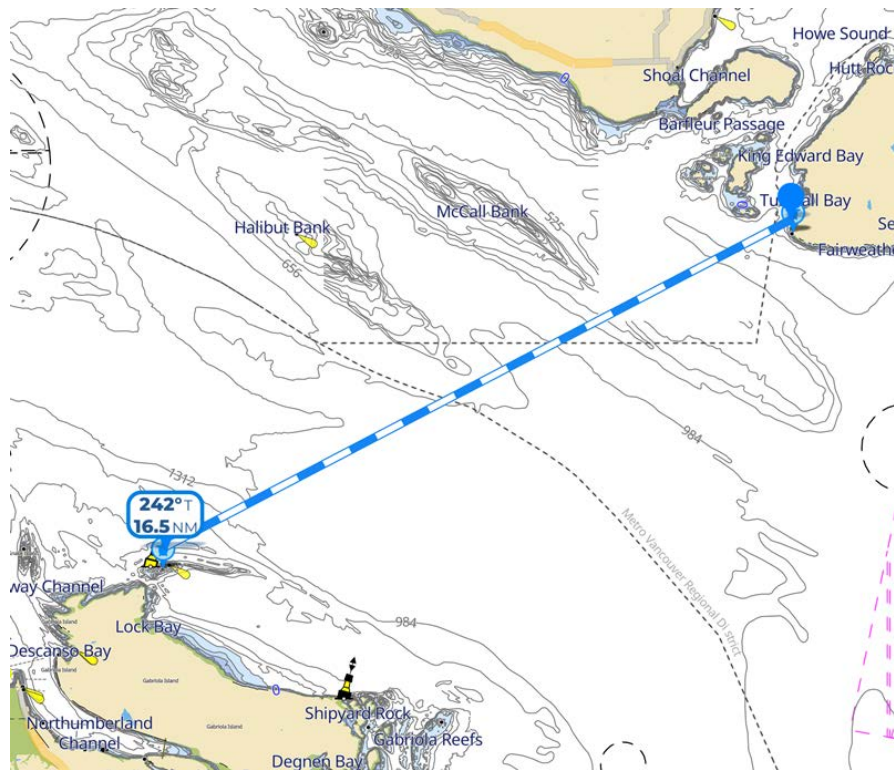
ORC Race 2 Virtual Start Line – Saturday



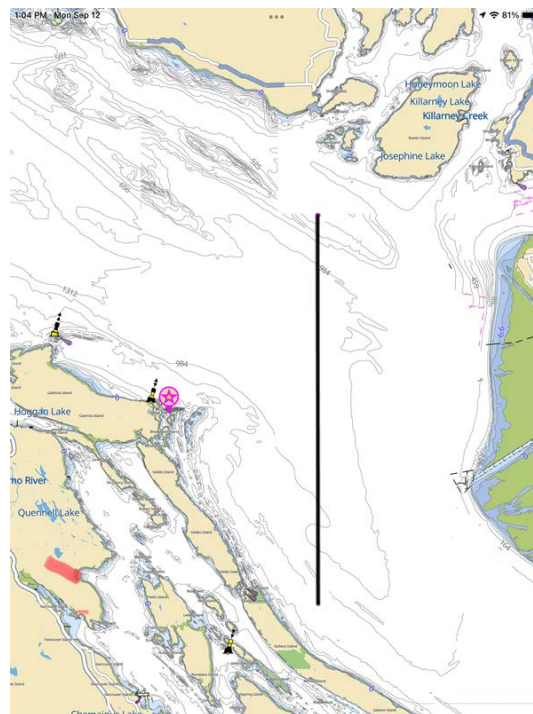
ORC Race 2 / PHRF Race 1 Finish - Saturday



ORC Race 2 Interim Finishing Line - Saturday



PHRF Race 1 Interim Finishing Line - Saturday



ORC Race 3/ PRHF Race 2 Interim Finishing Line - Sunday

