



North American Championships



Laser, Laser Radial and Laser 4.7
June 20 – 25, 2017

Royal Vancouver Yacht Club
Vancouver Canada

Sailing Instructions

1 RULES

- 1.1 The regatta will be governed by the rules as defined in *The Racing Rules of Sailing (RRS)*.
- 1.2 The full text of the prescriptions of Sail Canada that apply will be posted.
- 1.3 Racing rule 40 and the preamble to Part IV are amended so that competitors shall wear personal flotation devices at all times while on the water, except briefly for changing or adjusting clothing or personal equipment. . Wet suits or dry suits do not qualify as personal flotation devices.
- 1.4 Appendix P, Special Procedures for Rule 42, will apply except that Rule P2.3 will not apply and rule P2.2 is changed so that it will apply to any penalty after the first one.
- 1.5 In Rule 44.2 insert after the first sentence: "However, if Mark 1a is set, a boat may delay taking a penalty for an incident in the zone around Mark 1 or on the leg between Mark 1 and Mark 1a, until she has passed Mark 1a."
- 1.6 In these instructions [DP] denotes a rule for which the penalty is at the discretion of the Protest Committee and [NP] denotes a rule that shall not be grounds for protests by a boat. This changes RRS 60.1(a)

2 NOTICES TO COMPETITORS

Notices to competitors will be posted on the official notice board located near the north entrance to the Royal Vancouver YC (RVYC) Jericho clubhouse, and on the event website at www.royalvan.com/lasernas2017

3 CHANGES TO SAILING INSTRUCTIONS

Any change to the sailing instructions will be posted before 0930 on the day it will take effect, except that any change to the schedule of races will be posted by 2000 on the day before it will take effect.

4 SIGNALS MADE ASHORE

- 4.1 Signals made ashore will be displayed at the flagpole on the north side of the RVYC Jericho clubhouse.
- 4.2 When flag AP is displayed ashore, '1 minute' is replaced with 'not less than 30 minutes' in race signal AP.

5 SCHEDULE OF RACES

- 5.1 Dates of racing: June 22 – 25, 2017.
- 5.2 Number of races: Twelve races are scheduled, with a target time of 50 minutes.
- 5.3 The scheduled time of the warning signal for the first race each day is 1100 hours.
- 5.4 No warning signal will be displayed after 1530 hours on Sunday, June 25.

6 CLASS FLAGS

Class flags will be:

Laser	White flag with class insignia
Laser Radial	Red flag with class insignia
Laser 4.7	Numeral pennant 4

7 RACING AREA

Attachment A shows the location of the racing area.

8 THE COURSES

- 8.1 The Laser, Laser Radial and Laser 4.7 classes will each sail as a single fleet.
- 8.2 When the trapezoid course is used, the Laser class will sail the Outer Loop and the Laser Radial and Laser 4.7 classes will sail the Inner Loop.
- 8.3 The diagrams in Attachment B show the courses, the order in which marks are to be passed, and the side on which each mark is to be left.
- 8.4 All classes will sail the trapezoid course, unless flag R is displayed before or with the warning signal, in which case boats will sail the windward-leeward course.
- 8.5 No later than the warning signal, the race committee signal boat will display the approximate compass bearing of the first leg.

9 MARKS

- 9.1 Mark S is a staff displaying an orange flag in a race committee boat. Mark F is a staff displaying a blue flag.
- 9.2 Rounding marks are described in the course diagram shown as Attachment B.

10 AREA THAT IS AN OBSTRUCTION

A line beginning at the northwest corner of the RVYC Jericho breakwater, through a series of white or orange can buoys ending with the north end of the most westerly pier at Jericho Sailing Centre, delimits an obstruction. Boats may not pass south of this line.

11 THE START

- 11.1 To alert boats that a race or sequence of races will begin soon, the orange starting line flags will be displayed with one sound for at least five minutes before a warning signal is made.
- 11.2 The starting line will be between a staff displaying an orange flag on the race committee signal boat at the starboard end and mark S at the port end.
- 11.3 Boats whose warning signal has not been made shall avoid the starting area during the starting sequence for other races. The starting area is 100m from the starting line in any direction. [NP] [DP]
- 11.4 A boat starting later than 5 minutes after her starting signal will be scored Did Not Start without a hearing. This changes rules A4 and A5.
- 11.5 Sail numbers of OCS or UFD boats will be posted at the race committee finishing boat at the conclusion of each race. Failure to post these sail numbers will not be grounds for redress. This changes rule 62.1(a).
- 11.6 Rule 30.4 is supplemented as follows;
 - (a) Sail numbers will be displayed for at least 3 minutes. A long sound signal will be made when the numbers are initially displayed.
 - (b) A boat whose number is so displayed shall leave the starting area before the new preparatory signal. If she fails to do so, she is liable to be scored DNE. Thereafter she shall stay clear of the racing area until all boats have finished. [NP] [DP]

12 CHANGE OF THE NEXT LEG OF THE COURSE

To change the next leg of the course, the race committee will move the original mark (or the finishing line) to a new position.

13 THE FINISH

The finishing line will be between a staff displaying an orange flag on the race committee signal boat at the starboard end and mark F at the port end.

14 TIME LIMITS AND TARGET TIMES

- 14.1 Time limits are 90 minutes for all classes.
- 14.2 Target times are 50 minutes. Failure to meet the target time will not be grounds for redress. This changes rule 62.1(a).
- 14.3 Boats failing to finish within 20 minutes after the first boat sails the course and finishes will be scored Did Not Finish without a

hearing. This changes rules 35, A4 and A5.

15 PROTESTS AND REQUESTS FOR REDRESS

- 15.1 Protest forms are available at the race office, located in the North Boardroom, ground floor of the RVYC Jericho clubhouse and at the regatta desk at Jericho Sailing Centre. Protests and requests for redress or reopening shall be delivered to either location within the appropriate time limit.
- 15.2 The protest time limit is 45 minutes after the race committee finish boat has returned to the harbour.
- 15.3 Notices will be posted no later than 15 minutes after the protest time limit to inform competitors of hearings in which they are parties or named as witnesses. Notices will be placed on the official notice board and on the regatta website, and the protest committee will attempt to notify competitors by email. Failure to post the notices on the regatta website or send the email notification will not be grounds for redress or reopening. This changes rule 62.1(a).
- 15.4 Hearings will be held in the protest room, beginning at the time posted. The protest committee may schedule hearings before the end of protest time if the parties are available.
- 15.5 Notices of protests by the race committee or protest committee will be posted to inform boats under rule 61.1(b).
- 15.6 A list of boats that have been penalized for breaking rule 42 will be posted on the official notice board and the regatta website.
- 15.7 Recorded video and images from any source: press, media or support boat, or data/video of positioning electronic devices (tracking) cannot be used as evidence during hearings and shall not be grounds for requesting redress.
- 15.8 Penalties for breaches of a rule other than part 2 may be less than disqualification if the protest committee so decides. This changes rule 64.1(a). The scoring abbreviation for a discretionary penalty imposed under this instruction will be DPI.
- 15.9 On the last scheduled day of racing a request for redress based on a protest committee decision shall be delivered no later than 30 minutes after the decision was posted. This changes rule 62.2.
- 15.10 As an alternative to a protest hearing by the jury for an alleged breach of a rule of Part 2, boats may be given the choice of using an arbitration procedure in accordance with Appendix T.
- 15.11 To encourage boats to take penalties afloat, jury members may blow a whistle when they see what they believe to be a breach of a rule.

16 SCORING

- 16.1 Three races are required to be completed to constitute a series.
- 16.2
 - (a) When fewer than 5 races have been completed, a boat's series score will be the total of her race scores.
 - (b) When from 5 to 9 races have been completed, a boat's series score will be the total of her race scores excluding her worst score.
 - (c) When 10 or more races have been completed, a boat's series score will be the total of her race scores excluding her two worst scores.

17 SAFETY REGULATIONS

- 17.1 A boat that retires from a race shall notify the race committee as soon as possible.
- 17.2 Boats must obey all warning signals and directions from, and shall not obstruct, commercial traffic.

18 REPLACEMENT OF EQUIPMENT

Substitution of damaged or lost equipment will not be allowed unless authorized by the protest committee. Requests for substitution shall be made to the committee at the first reasonable opportunity. [NP]

19 EQUIPMENT AND MEASUREMENT CHECKS

A boat or equipment may be inspected at any time for compliance with the class rules and sailing instructions. On the water, a boat can be instructed by a race committee equipment inspector or measurer to proceed immediately to a designated area for inspection. [NP]

20 OFFICIAL BOATS

- 20.1 Race committee signal boats may be identified with a red and white Sail Canada flag. Judge boats are identified with a green flag bearing a black 'J'.

20.2 Actions by official boats shall not be grounds for requesting redress by a boat. This changes rule 62.1(a).

21 SUPPORT BOATS

21.1 Support boats shall be marked with numbered flags provided by the organizing authority at the regatta office and shall be equipped with a VHF radio. [NP] [DP]

20.2 Support boats are expected to render assistance to a boat in danger when requested by the race committee or jury. [NP] [DP]

20.3 Prohibited zones for support boats:

- After the warning signal for a class, support boats shall stay outside the starting area.
- After the start for a class, support boats may proceed upwind on the starboard side of the course. Support boats shall stay 100m from the nearest competitor..
- At the weather mark, support boats shall stay 100m away from marks 1, 1a and 2.
- Support boats are not permitted on the port side of the course, or the area between the Inner and Outer loops at any time. [NP] [DP]

22 TRASH DISPOSAL

Boats shall not put trash in the water. Trash may be placed aboard support and race committee boats. [NP]

23 RADIO COMMUNICATION

Except in an emergency, a boat shall neither make radio transmissions while racing nor receive radio communications not available to all boats. This restriction also applies to mobile telephones. [NP]

24 DISCLAIMER OF LIABILITY

Competitors participate in the regatta entirely at their own risk. See rule 4, Decision to Race. The organizing authority will not accept any liability for material damage or personal injury or death sustained in conjunction with or prior to, during, or after the regatta.

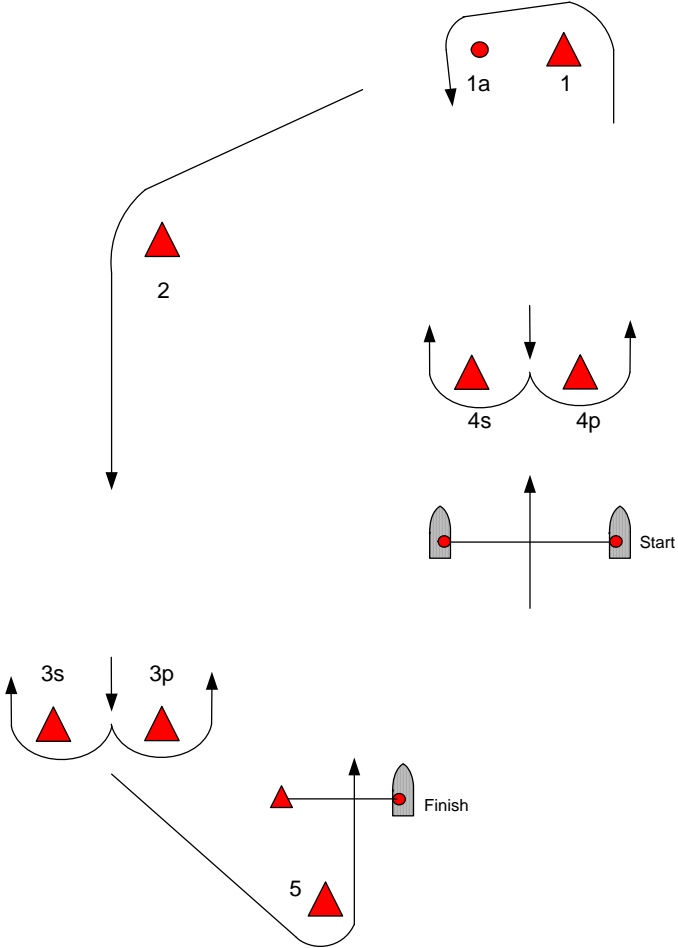
25 INSURANCE

Each participating boat shall be insured with valid third-party liability insurance with a minimum cover of \$1 million CAD per event.



Attachment B

Trapezoid Course



Rounding Marks
Marks 1 and 1a are yellow inflatables
Marks 2, 3s and 3p are green inflatables
Marks 4s and 4p are pink inflatables

Mark 5 is an orange inflatable

Courses
Marks to be rounded in the order:

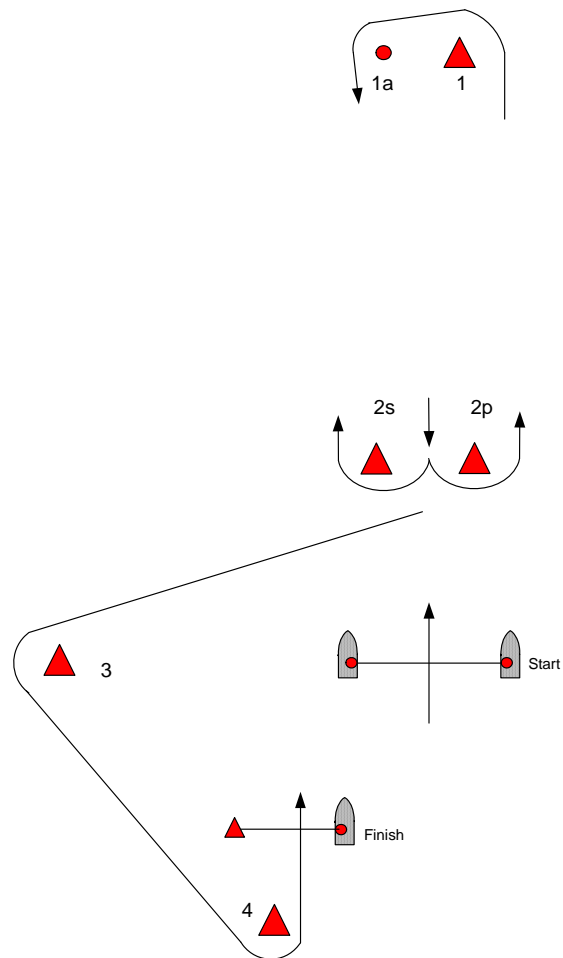
Laser Standard – Outer
Start – 1 – 1a – 2 – 3s/3p – 2 – 3s/3p – 5 – Finish

Laser Radial – Inner
Start – 1 – 1a – 4s/4p – 1 – 1a – 2 – 3s/3p – 5 – Finish

Laser 4.7
Start – 1 – 1a – 2 – 3s/3p – 5 – Finish

Windward-Leeward Course

(When flag R is displayed)



Rounding Marks

Marks 1 and 1a are yellow inflatables

Marks 2s and 2p are pink inflatables

Mark 3 is a green inflatable

Mark 4 is an orange inflatable

Courses

Marks to be rounded in the order:

Laser & Laser Radial

Start – 1 – 1a – 2s/2p – 1 – 1a – 2s/2p – 3 – 4 – Finish

Laser 4.7

Start – 1 – 1a – 2s/sp – 3 – 4 – Finish